



GAT MONTHLY MEMBERSHIP PROGRESS REPORT

Results as of: 6/30/2024

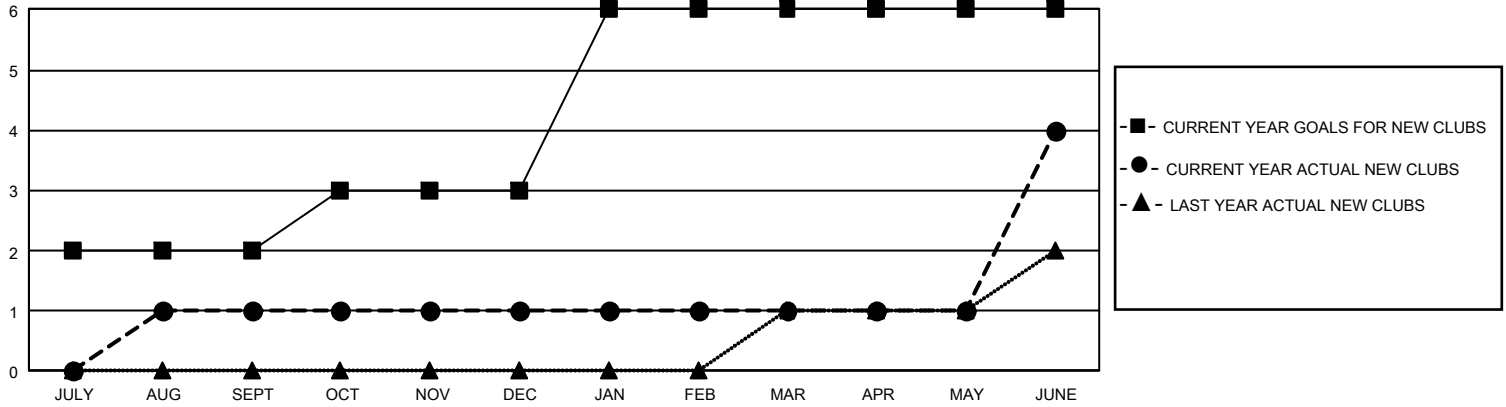
GMT Constitutional Area 4, Group J

REPORT DOES NOT INCLUDE CLUBS IN UNDISTRICTED AREAS.

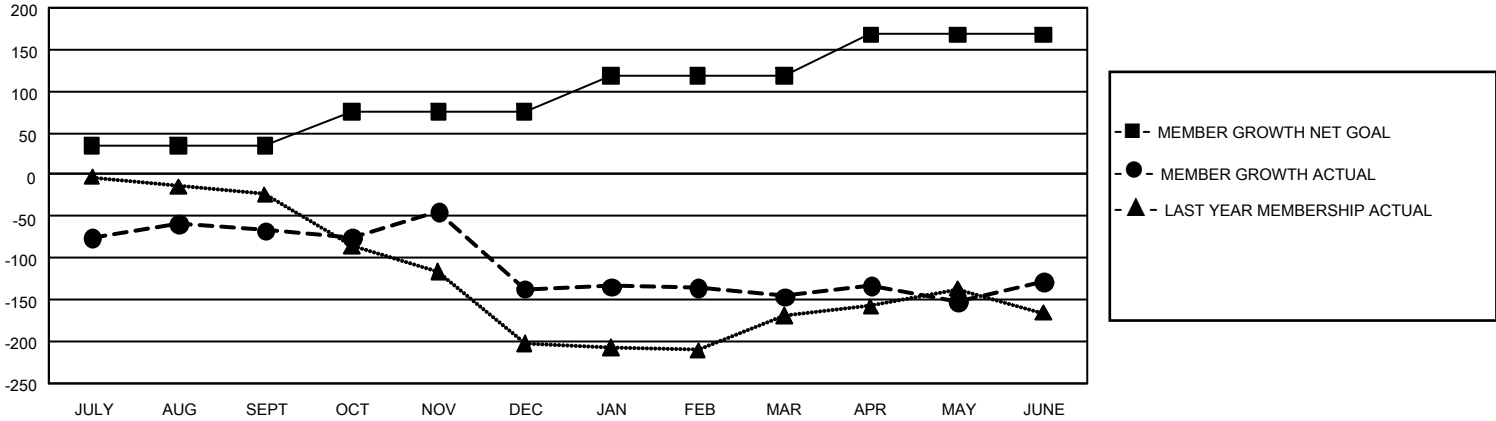
Clubs			
RESULTS FOR 2023-2024			
QUARTER	NEW CLUB GOAL	NEW CLUBS	DROPPED CLUBS
JULY/AUG/SEPT	6	1	3
OCT/NOV/DEC	3	0	5
JAN/FEB/MAR	9	0	0
APR/MAY/JUNE	0	3	3

Members			
RESULTS FOR 2023-2024			
QUARTER	MEMBER GROWTH NET GOAL	MEMBER GROWTH ACTUAL	DROPPED MEMBERS ACTUAL (including transfers)
JULY/AUG/SEPT	35	91	147
OCT/NOV/DEC	40	107	168
JAN/FEB/MAR	43	81	80
APR/MAY/JUNE	50	196	171

GOALS AND ACTUAL NEW CLUBS CUMULATIVE



GOALS AND ACTUAL MEMBERS CUMULATIVE



DROPPED CLUBS: 11	
DROPPED MEMBERS	
DECEASED	45
CLUB CANCELLED	149
OTHER	372
TOTAL	566

96 CLUBS OF 157 ADDED 1 OR MORE NEW MEMBERS

[CLICK HERE FOR CUMULATIVE MEMBERSHIP DATA](#)

GENDER DISTRIBUTION	
MALE	2,012 (53.30%)
FEMALE	1,762 (46.68%)
NON BINARY	0 (0.00%)
PREFER NOT TO ANSWER	1 (0.03%)
TOTAL FAMILY UNIT MEMBERS	1,006
FAMILY MEMBERS PAYING HALF DUES	525